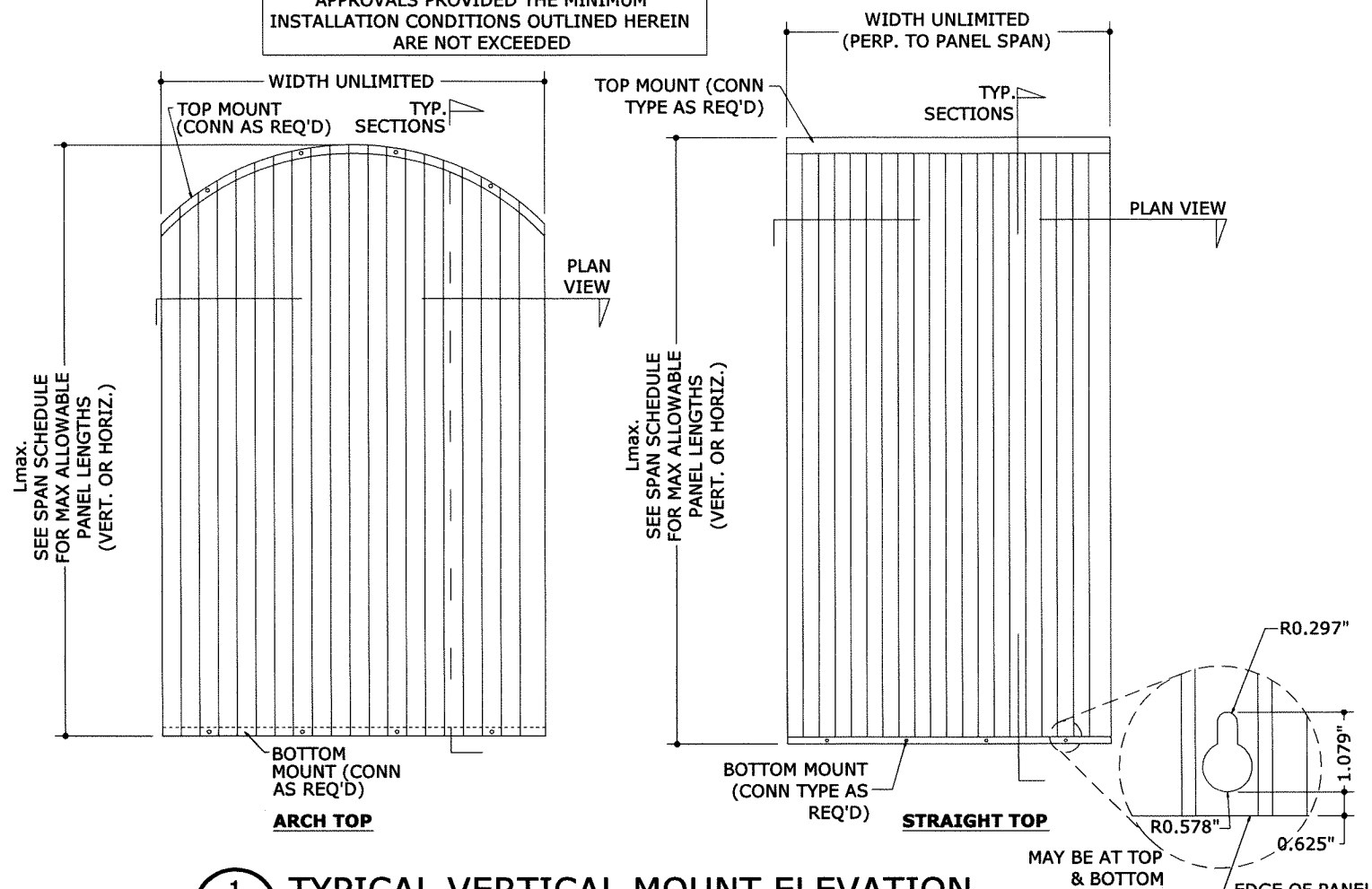


EASTERN METAL SUPPLY

2" CLEAR BERTHA STORM PANEL (HVHZ & NON-HVHZ)

THE CLEAR POLYCARBONATE PANELS APPROVED IN THIS DOCUMENT MAY BE INTEGRATED WITH ALTERNATE STEEL/ALUMINUM PANEL APPROVALS PROVIDED THE MINIMUM INSTALLATION CONDITIONS OUTLINED HEREIN ARE NOT EXCEEDED



FIELD DRILLED PANEL HOLES SHALL NOT EXCEED THE LIMITATIONS SHOWN IN THESE DETAILS AND SHALL NOT HAVE ANY CRACKS/BREAKS

1 TYPICAL VERTICAL MOUNT ELEVATION
1 N.T.S. ELEVATION

MINIMUM POLYCARBONATE PANEL PROPERTIES FOR USE WITH THIS APPROVAL:		
SPECIFIC GRAVITY	1.20 G/CC	ASTM D792
TENSILE YIELD STRENGTH	8700 PSI	ASTM D638
FLEXURAL STRENGTH AT YIELD	12500 PSI	ASTM D790
FLEXURAL MODULUS	340000 PSI	ASTM D790
NOTCHED IZOD	18 FT-LB/IN	ASTM D256
SMOKE DENSITY	75 MAX	ASTM D2843
RATE OF BURNING	C-1 CLASS MAX	ASTM D635
SELF IGNITION	650 DEG. F	ASTM D1929

MAXIMUM ALLOWABLE DESIGN PRESSURES:

AS NOTED IN DESIGN SCHEDULES

DESIGN NOTES:

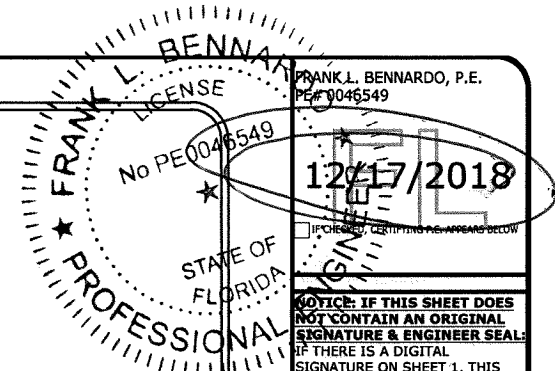
POSITIVE & NEGATIVE (ASD) DESIGN PRESSURES FOR USE WITH THIS SYSTEM SHALL BE DETERMINED ON A SITE-SPECIFIC BASIS AND COMPARED TO LIMITING FACTORS AS STIPULATED HEREIN. THEY SHALL BE CALCULATED IN ACCORDANCE WITH THE GOVERNING CODE REQUIREMENTS & IN ACCORDANCE WITH ASCE 7-10 AND CHAPTER 1609 OF THE FLORIDA BUILDING CODE. THEY SHALL BE LESS THAN OR EQUAL TO THE POSITIVE OR NEGATIVE DESIGN PRESSURE CAPACITY VALUES LISTED HEREIN FOR ANY ASSEMBLY AS SHOWN.

TOP & BOTTOM DETAILS SHOWN MAY BE INTERCHANGED AS FIELD CONDITIONS DICTATE. PANELS MAY BE MOUNTED VERTICALLY OR HORIZONTALLY AS APPLICABLE.

GENERAL NOTES:

- THIS SPECIFICATION HAS BEEN DESIGNED AND SHALL BE FABRICATED IN ACCORDANCE WITH THE REQUIREMENTS OF THE FLORIDA BUILDING CODE SIXTH EDITION (2017) FOR USE INSIDE AND OUTSIDE OF THE HVHZ, PER TAS 201, 202 & 203 AND ASTM E330, E1886 & E1996 TEST PROTOCOLS. CONTRACTOR SHALL INVESTIGATE AND CONFORM TO ALL LOCAL BUILDING CODE AMENDMENTS WHICH MAY APPLY. DESIGN CRITERIA BEYOND AS STATED HEREIN MAY REQUIRE ADDITIONAL SITE-SPECIFIC SEALED ENGINEERING.
- NO 33-1/3% INCREASE IN ALLOWABLE STRESS HAS BEEN USED IN THE DESIGN OF THIS SYSTEM.
- THE ARCHITECT/ENGINEER OF RECORD FOR THE PROJECT SUPERSTRUCTURE WITH WHICH THIS DESIGN IS USED SHALL BE RESPONSIBLE FOR THE INTEGRITY OF ALL SUPPORTING SURFACES TO THIS DESIGN WHICH SHALL BE COORDINATED BY THE PERMITTING CONTRACTOR.
- SEPARATE 'SITE-SPECIFIC' SIGNED AND SEALED ENGINEERING SHALL BE REQUIRED IN ORDER TO DEVIATE, INTERPOLATE, AND EXTRAPOLATE FROM LOADS, DEFLECTIONS, OR SPANS CONTAINED HEREIN. CONTACT THIS ENGINEER AND VISIT THE ACCOMPANYING DIGITAL INFORMATION REFERENCED HEREIN FOR ALTERNATE SPAN CALCULATIONS AS MAY BE REQUIRED.
- THE SYSTEM DETAILED HEREIN IS GENERIC AND DOES NOT PROVIDE INFORMATION FOR A SPECIFIC SITE. FOR SITE CONDITIONS DIFFERENT FROM THE CONDITIONS DETAILED HEREIN, A LICENSED ENGINEER OR REGISTERED ARCHITECT SHALL PREPARE SITE SPECIFIC DOCUMENTS FOR USE IN CONJUNCTION WITH THIS DOCUMENT.
- DESIGN PRESSURES NOTED HEREIN ARE BASED ON MAXIMUM TESTED PRESSURES DIVIDED BY A 1.5 SAFETY FACTOR.
- ALL FASTENERS TO BE 1/4"Ø OR GREATER SAE GRADE 5 UNLESS NOTED OTHERWISE. FASTENERS SHALL BE CADMIUM-PLATED OR OTHERWISE CORROSION-RESISTANT MATERIAL AND SHALL COMPLY WITH "SPECIFICATIONS FOR ALUMINUM STRUCTURES" SECTION J.3.7.2 BY THE ALUMINUM ASSOCIATION, INC., & ANY APPLICABLE FEDERAL, STATE, AND/OR LOCAL CODES.
- ALL STORM PANELS SHALL BE CLEAR POLYCARBONATE, t=0.100" AND CONFORM TO THE SPECIFICATIONS LISTED HEREIN.
- ALL ALUMINUM EXTRUSIONS SHALL BE 6063-T6 ALUMINUM ALLOY OR BETTER, UNLESS NOTED OTHERWISE.
- CONCRETE ANCHORS NOTED HEREIN SHALL BE EMBEDDED TO NON-CRACKED CONCRETE ONLY. INSTALL ALL CONCRETE ANCHORS PER MANUFACTURER'S RECOMMENDATIONS.
- THE CONTRACTOR IS RESPONSIBLE TO INSULATE OR PROTECT ALL MEMBERS FROM DISSIMILAR MATERIALS TO PREVENT ELECTROLYSIS.
- ENGINEER SEAL AFFIXED HERE TO VALIDATES STRUCTURAL DESIGN AS SHOWN ONLY. USE OF THIS SPECIFICATION BY CONTRACTOR, et. al. INDEMNIFIES & SAVES HARMLESS THIS ENGINEER FOR ALL COST & DAMAGES INCLUDING LEGAL FEES & APPELLATE FEES RESULTING FROM MATERIAL FABRICATION, SYSTEM ERECTION, & CONSTRUCTION PRACTICES BEYOND THAT WHICH IS CALLED FOR BY LOCAL, STATE, & FEDERAL CODES & FROM DEVIATIONS OF THIS PLAN.
- EXCEPT AS EXPRESSLY PROVIDED HEREIN, NO ADDITIONAL CERTIFICATIONS OR AFFIRMATIONS ARE INTENDED.
- ALTERATIONS, ADDITIONS, OR OTHER MARKINGS TO THIS DOCUMENT ARE NOT PERMITTED AND INVALIDATE THIS CERTIFICATION.
- PANELS SHALL BE PERMANENTLY LABELED WITH A MINIMUM OF (1) LABEL PER PANEL, CONTAINING THE FOLLOWING INFORMATION:

EASTERN METAL SUPPLY, INC.
 WEST PALM BEACH, FL
 TAS 201, TAS 202 & TAS 203
 ASTM E330, ASTM E1886 & ASTM E1996
 FLORIDA PRODUCT APPROVAL NUMBER



NOTICE: IF THIS SHEET DOES NOT CONTAIN AN ORIGINAL SIGNATURE & ENGINEER SEAL, IF THERE IS A DIGITAL SIGNATURE ON SHEET 1, THIS SHEET IS PART OF A DIGITALLY SIGNED FILE, SHALL REMAIN IN DIGITAL FORMAT, & PRINTED COPIES OF THIS DOCUMENT ARE NOT CONSIDERED SIGNED AND SEALED. IF THERE IS NO DIGITAL SIGNATURE ON SHEET 1 OR THIS SHEET DOES NOT CONTAIN AN ENGINEER'S ORIGINAL SIGNATURE & SEAL, THIS SHEET IS A COPY/DRAFT.

ENGINEERING EXPRESS
 CORPORATE OFFICE:
 160 SW 12th AVE, SUITE 106
 DEERFIELD BEACH, FL 33442
 P: (954) 354-0660 F: (954) 354-0443
 E: HELLO@ENGINEERINGEXPRESS.COM
 CERT OF AUTH #9885

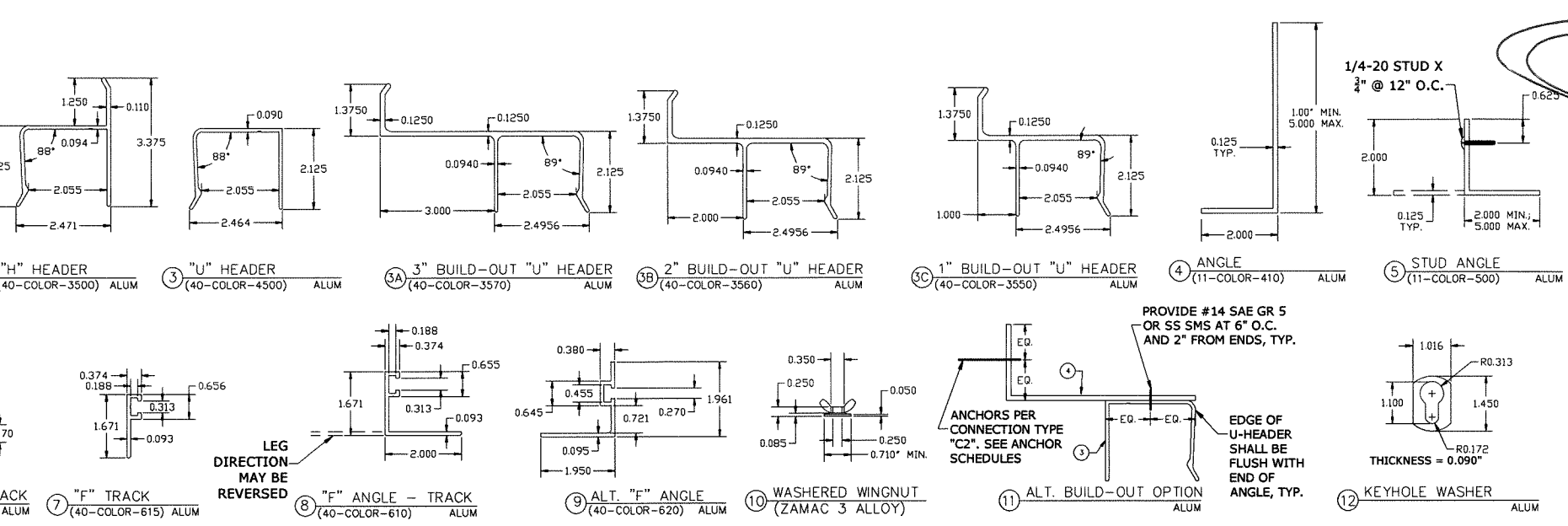
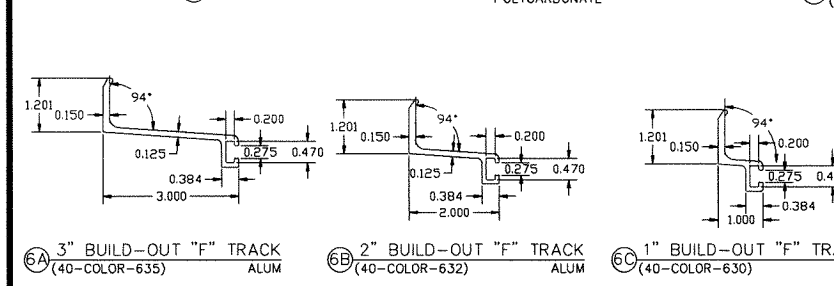
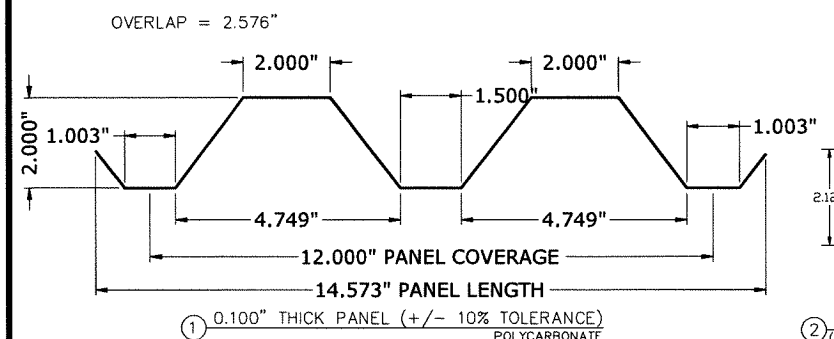
EASTERN METAL SUPPLY
 4268 WESTROADS DR
 WEST PALM BEACH, FL
 (800) 432-2204
 2" CLEAR BERTHA STORM PANEL
 FLORIDA BUILDING CODE
 FLORIDA STATEWIDE APPROVAL FL28390.1

REMARKS	DATE	DRWN	CHKD	DATE
INIT ISSUE	09/27/18	RWN	FLB	

THIS DOCUMENT IS THE PROPERTY OF ENGINEERING EXPRESS, AND SHALL NOT BE REPRODUCED IN WHOLE OR PART WITHOUT WRITTEN CONSENT OF ENGINEERING EXPRESS. ALTERATIONS, ADDITIONS, OR OTHER MARKINGS TO THIS DOCUMENT ARE NOT PERMITTED AND INVALIDATE OUR CERTIFICATION.

COPYRIGHT ENGINEERING EXPRESS
18-6492
 SCALE: NTS UNLESS NOTED
1

V:\Projects\18-6492 Clear Bertha Storm Panel\WP18-6492g-Dwg-FL28390.1.dwg
12/17/2018 - 2:35pm rickn



SCHEDULE 1: ALLOWABLE PANEL SPANS (HVHZ & NON-HVHZ)

2" CLEAR PANELS

MAXIMUM DESIGN PRESSURE (PSF)	ALLOWABLE SPAN (Lmax)	MINIMUM STORM PANEL SEPARATION FROM GLASS (HVHZ, WIND ZONE 4 & ESSENTIAL FACILITIES)	
		INSTALLATIONS LESS THAN 30' ABOVE GRADE	INSTALLATIONS GREATER THAN 30' ABOVE GRADE
+/-21	132.0 in	10.50 in	9.75 in
+/-26	120.0 in	10.00 in	9.25 in
+/-31	108.5 in	9.50 in	8.50 in
+/-36	96.5 in	9.00 in	8.00 in
+/-41	84.5 in	8.50 in	7.25 in
+/-46	73.0 in	8.00 in	6.75 in
+/-51	61.0 in	7.50 in	6.00 in
+/-56	49.5 in	7.00 in	5.25 in
+/-60	40.0 in	6.50 in	4.75 in

- SEE SHEET 4 FOR ANCHORAGE OPTIONS

SCHEDULE 2: ALLOWABLE PANEL SPANS (NON-HVHZ ONLY)

2" CLEAR PANELS

MAXIMUM DESIGN PRESSURE (PSF)	ALLOWABLE SPAN (Lmax)	MINIMUM STORM PANEL SEPARATION FROM GLASS (WIND ZONE 4 & ESSENTIAL FACILITIES)	
		INSTALLATIONS LESS THAN 30' ABOVE GRADE	INSTALLATIONS GREATER THAN 30' ABOVE GRADE
+/-35	144.0 in	10.25 in	7.00 in
+/-40	133.0 in	9.75 in	6.25 in
+/-45	122.0 in	9.50 in	5.50 in
+/-50	111.0 in	9.00 in	4.75 in
+/-55	100.0 in	8.50 in	4.00 in
+/-60	89.0 in	8.00 in	3.00 in

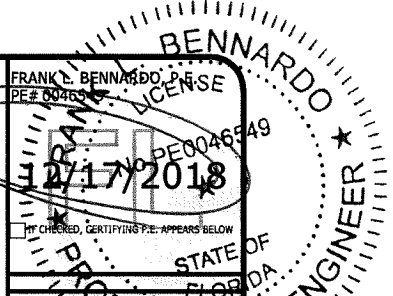
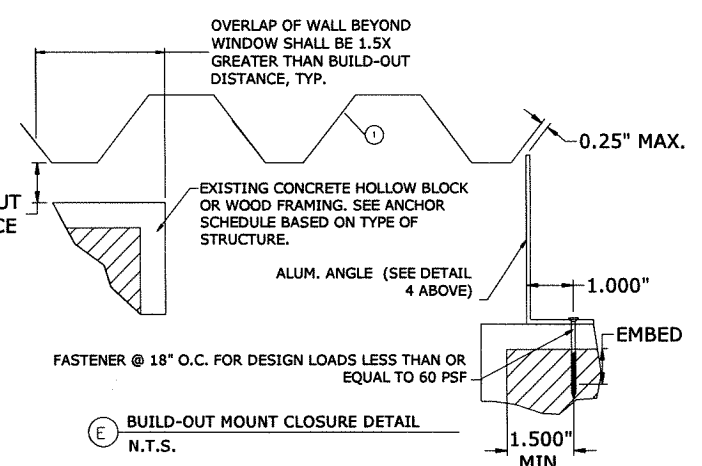
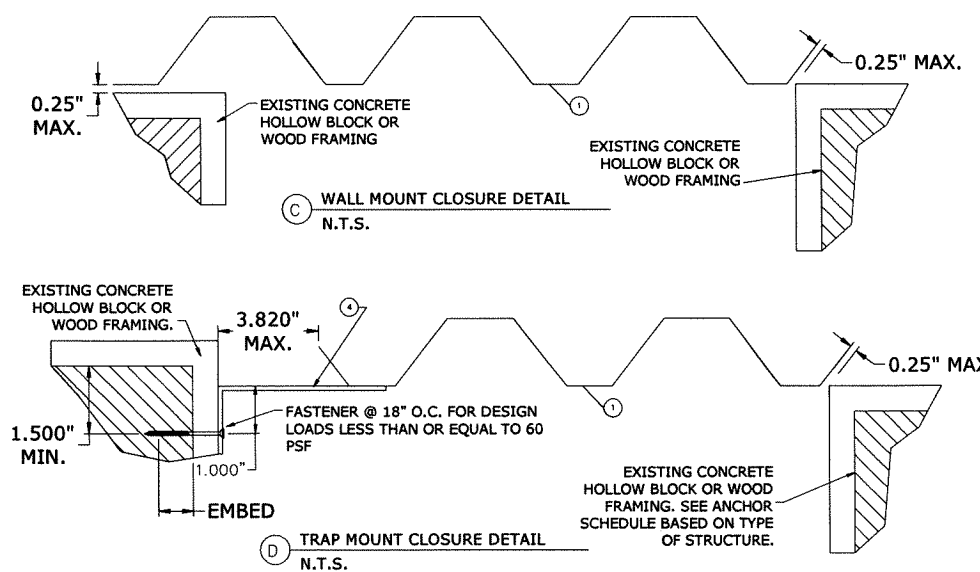
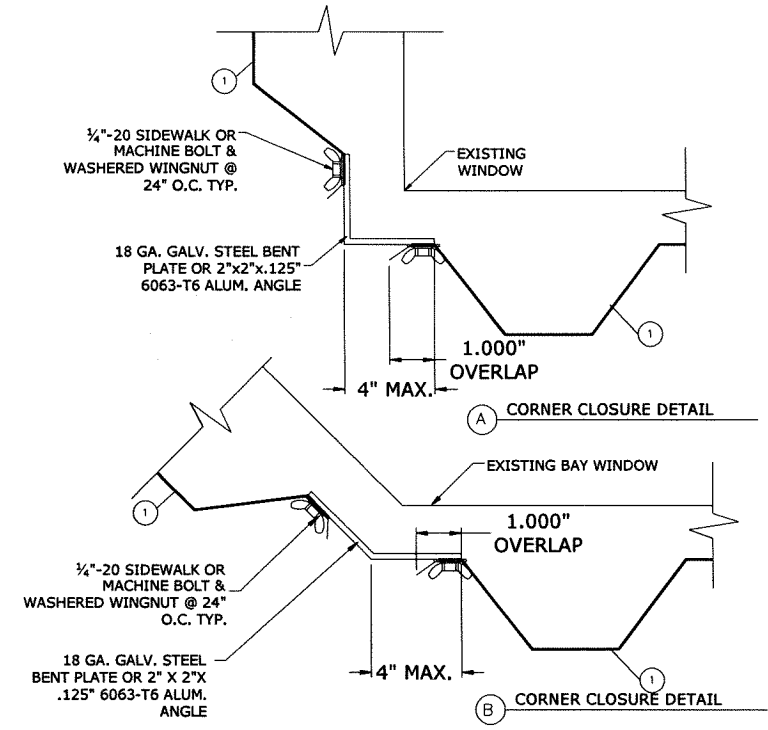
- SEE SHEET 5 FOR ANCHORAGE OPTIONS
- SPANS AND SEP. FROM GLASS LISTED IN THIS TABLE ARE ONLY APPLICABLE FOR CONNECTION TYPES C1 AND C2 ONLY.
- "H" HEADER, "U" HEADER AND "C3" CONNECTION OPTIONS SHALL NOT BE USED WITH THIS TABLE
- MINIMUM PANEL SPAN IS 36.0". UTILIZE GLASS SEPARATION FOR 89" SPAN TIER FOR SPANS LESS THAN SHOWN IN TABLE

SPAN SCHEDULE NOTES:

1. ENTER SPAN SCHEDULES WITH NEGATIVE DESIGN LOAD & PANEL FASTENER SPACING TO DETERMINE MAXIMUM ALLOWABLE STORM PANEL SPAN. SCHEDULE IS ACCEPTABLE FOR USE WITH POSITIVE LOADS LESS THAN OR EQUAL TO NEGATIVE DESIGN LOADS.
2. LINEAR INTERPOLATION BETWEEN LOADS IS ACCEPTABLE, OTHERWISE USE NEXT HIGHER LOAD.

GLASS SEPARATION NOTES:

1. ENTER SPAN SCHEDULE WITH POSITIVE DESIGN LOAD TO DETERMINE MINIMUM ALLOWABLE SEPARATION FROM THE OPENING TO BE PROTECTED.
2. SCHEDULE IS REQUIRED FOR USE WITH POSITIVE LOADS ONLY. INTERPOLATION BETWEEN LOADS IS ACCEPTABLE, OTHERWISE USE NEXT HIGHER LOAD.
3. FOR INSTALLATIONS OUTSIDE OF THE HVHZ AND OUTSIDE OF ESSENTIAL FACILITIES IN ASTM WIND ZONES 1 THROUGH 3, THE GLASS SEPARATION SCHEDULE IS NOT REQUIRED AND NO MINIMUM SEPARATION FROM THE PROTECTED OPENING IS REQUIRED.



NOTICE: THIS SHEET DOES NOT CONTAIN AN ORIGINAL SIGNATURE & PROFESSIONAL ENGINEER'S SEAL. IF THERE IS A DIGITALLY SIGNED FILE, IT SHALL REMAIN IN DIGITAL FORMAT, & PRINTED COPIES OF THIS DOCUMENT ARE NOT CONSIDERED SIGNED AND SEALED. IF THERE IS NO DIGITAL SIGNATURE ON SHEET 1 OR THIS SHEET DOES NOT CONTAIN AN ENGINEER'S ORIGINAL SIGNATURE & SEAL, THIS SHEET IS A COPY/DRAFT.

ENGINEERING EXPRESS
CORPORATE OFFICE:
160 SW 12th AVE, SUITE 106
DEERFIELD BEACH, FL 33442
P: (954) 354-0660 F: (954) 354-0443
E: HELLO@ENGINEERINGEXPRESS.COM
ENGINEERINGEXPRESS.COM
CERT OF AUTH #9885

EASTERN METAL SUPPLY
4268 WESTROADS DR
WEST PALM BEACH, FL
(800) 432-2204
2" CLEAR BERTHA STORM PANEL
FLORIDA BUILDING CODE
FLORIDA STATEWIDE APPROVAL FL28390.1

DATE	DRWN	CHKD	DATE
09/27/18	RWN	JLB	

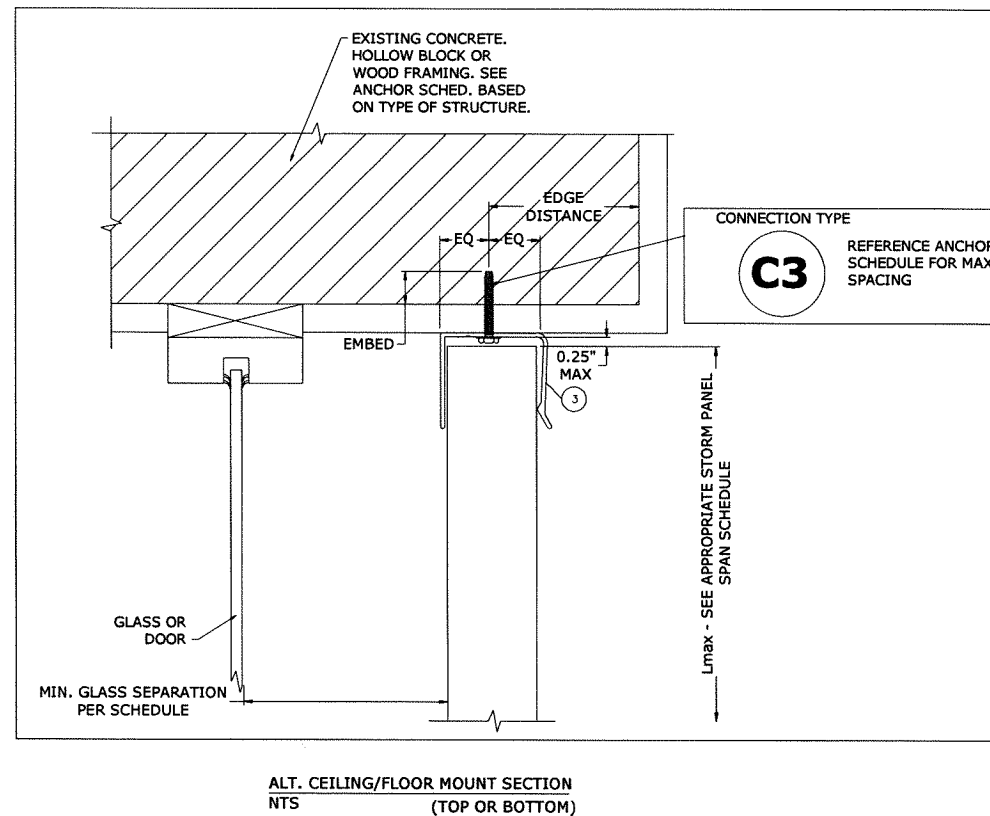
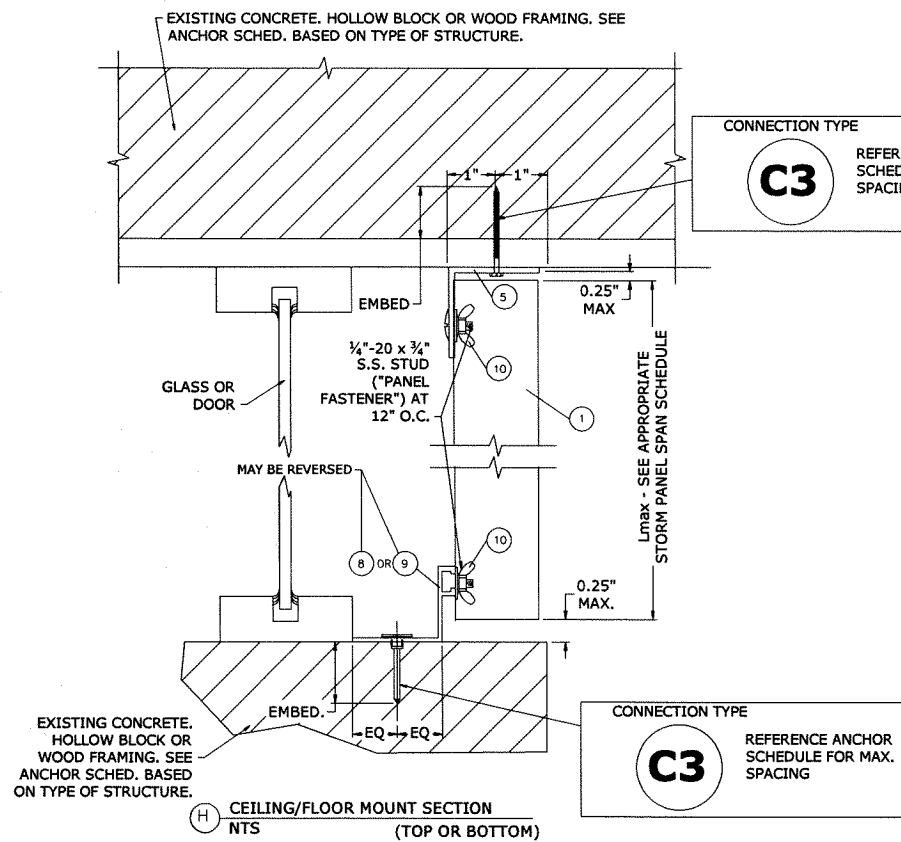
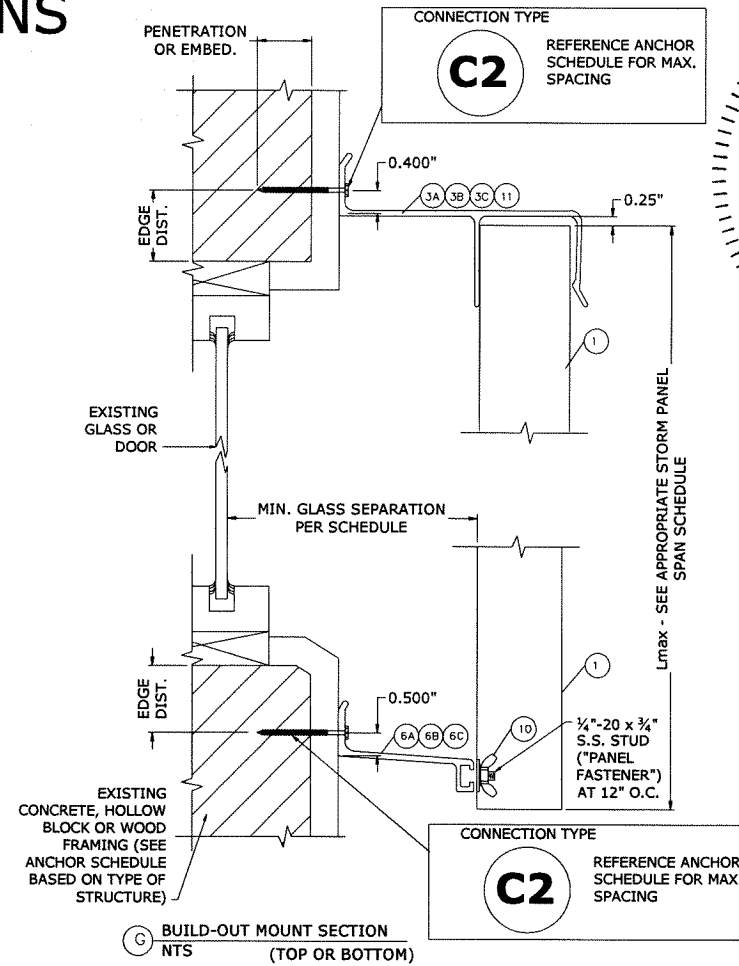
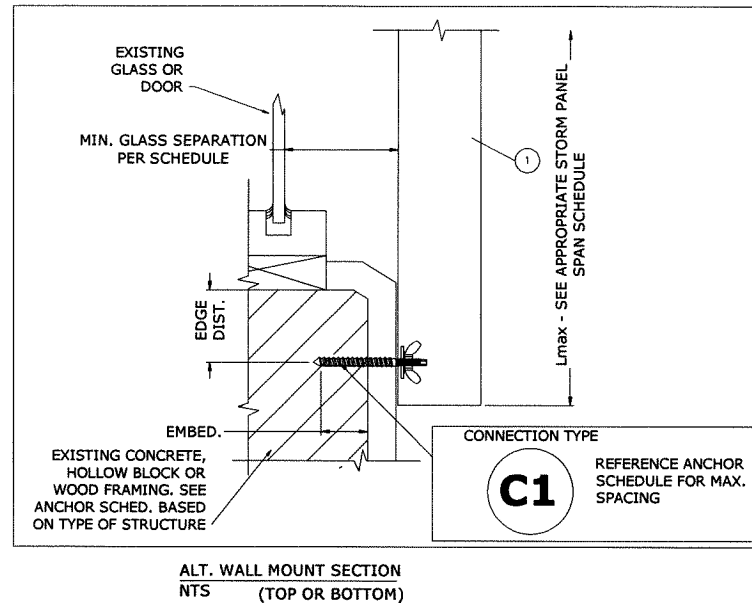
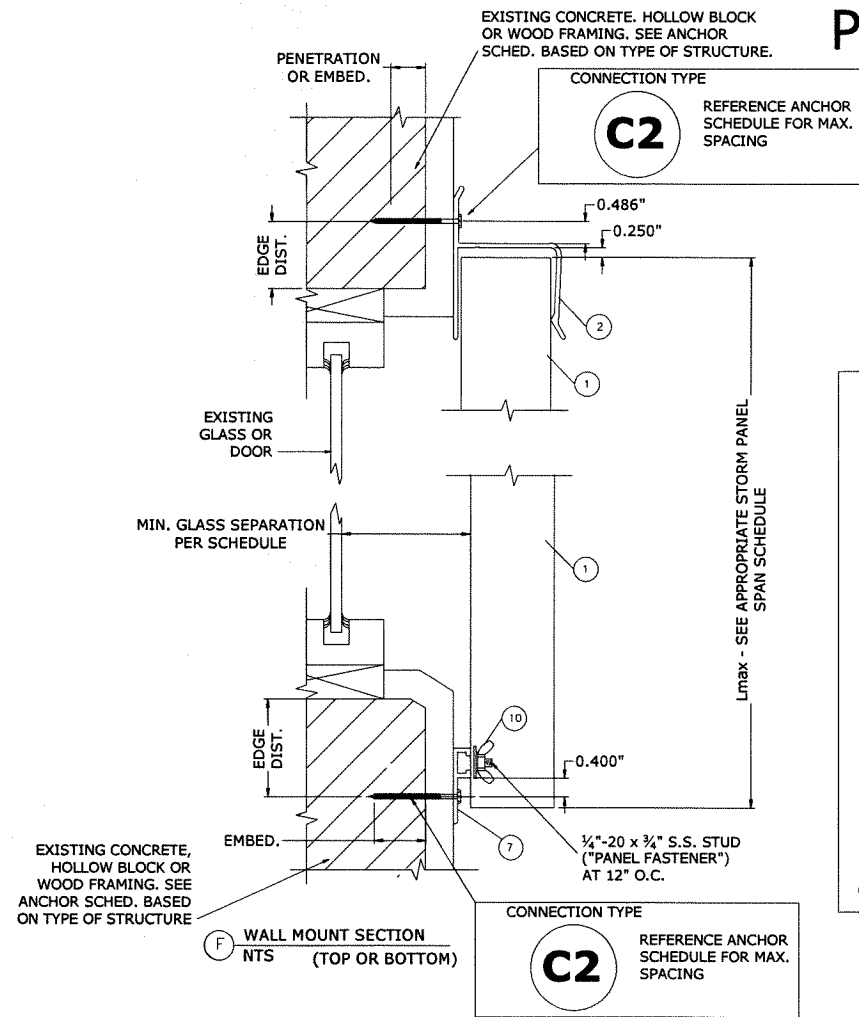
REMARKS
INIT ISSUE

THIS DOCUMENT IS THE PROPERTY OF ENGINEERING EXPRESS. IT IS TO BE USED ONLY FOR THE PROJECT AND CONDITIONS SPECIFICALLY IDENTIFIED HEREIN. ANY REUSE, ALTERATIONS, ADDITIONS OR OTHER MARKINGS TO THIS DOCUMENT ARE NOT PERMITTED AND INVALIDATE OUR CERTIFICATION.

COPYRIGHT ENGINEERING EXPRESS ©
18-6492
SCALE: NTS UNLESS NOTED
OF 5
2

V:\Project\18-6492 Clear Bertha Storm Panel\WP\18-6492g-Dwg-FL28390.1.dwg
rickn
12/17/2018 - 2:36pm

PANEL CONNECTION OPTIONS



FRANK L. BENNARDO, P.E.
PE# 0046549

12/17/2018

No PE0046549

STATE OF FLORIDA PROFESSIONAL ENGINEER

NOTICE: IF THIS SHEET DOES NOT CONTAIN AN ORIGINAL SIGNATURE & ENGINEER SEAL, THERE IS NO DIGITAL SIGNATURE ON SHEET 1, THIS SHEET IS PART OF A DIGITALLY SIGNED FILE, AND PRINTED COPIES OF THIS DOCUMENT ARE NOT CONSIDERED SIGNED AND SEALED. IF THERE IS NO DIGITAL SIGNATURE ON SHEET 1 OR THIS SHEET DOES NOT CONTAIN AN ENGINEER'S ORIGINAL SIGNATURE & SEAL, THIS SHEET IS A COPY/DRAFT.

ENGINEERING EXPRESS

CORPORATE OFFICE:
160 SW 12th AVE, SUITE 106
DEERFIELD BEACH, FL 33442
P: (954) 354-0660 F: (954) 354-0443
E: HELLO@ENGINEERINGEXPRESS.COM
ENGINEERINGEXPRESS.COM
CERT OF AUTH #9885

EASTERN METAL SUPPLY
4268 WESTROADS DR
WEST PALM BEACH, FL
(800) 432-2204

2" CLEAR BERTHA STORM PANEL
FLORIDA BUILDING CODE
FLORIDA STATEWIDE APPROVAL FL28390.1

REMARKS	DATE	DRWN	CHKD
INIT. ISSUE	09/27/18	RWN	FLB

THIS DOCUMENT IS THE PROPERTY OF ENGINEERING EXPRESS AND SHALL NOT BE REPRODUCED IN WHOLE OR PART WITHOUT THE WRITTEN PERMISSION OF ENGINEERING EXPRESS. ANY ADDITIONS OR OTHER MARKINGS TO THIS DOCUMENT ARE NOT PERMITTED AND INVALIDATE OUR CERTIFICATION.

COPYRIGHT ENGINEERING EXPRESS

18-6492

SCALE: NTS UNLESS NOTED

OR 3

ANCHOR SPACING (FOR SCHEDULE 1 - HVHZ & NON-HVHZ):

2" CLEAR PANELS

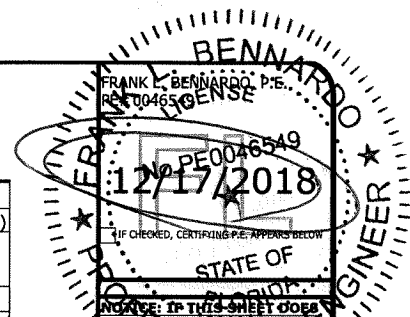
HOST STRUCT.	ANCHOR	LOAD (psf)	EDGE DISTANCES AS NOTED								
			Spans Up To 3'-4" (40")			Spans Up To 7'-0" (84")			Spans Up To 11'-0" (132")		
			CONNECTION TYPE			CONNECTION TYPE			CONNECTION TYPE		
CONCRETE	1/4" ITW TAPCON WITH 1-3/4" EMBED AND 1-1/2" MIN. EDGE DISTANCE (3192 psi MIN CONCRETE)	21	12.0"	12.0"	12.0"	12.0"	12.0"	12.0"	12.0"	12.0"	12.0"
		31	12.0"	12.0"	12.0"	12.0"	12.0"	12.0"	12.0"	12.0"	12.0"
		41	12.0"	12.0"	12.0"	12.0"	12.0"	12.0"	12.0"	12.0"	12.0"
		51	12.0"	12.0"	12.0"	12.0"	12.0"	12.0"	12.0"	12.0"	12.0"
		60	12.0"	12.0"	12.0"	12.0"	12.0"	12.0"	12.0"	12.0"	12.0"
		60	12.0"	12.0"	12.0"	12.0"	12.0"	12.0"	12.0"	12.0"	12.0"
	1/4" ELCO ULTRACON WITH 1-3/4" EMBED AND 1" MIN. EDGE DISTANCE (2846 psi MIN CONCRETE)	21	12.0"	12.0"	12.0"	12.0"	12.0"	12.0"	12.0"	12.0"	12.0"
		31	12.0"	12.0"	12.0"	12.0"	12.0"	12.0"	12.0"	12.0"	12.0"
		41	12.0"	12.0"	12.0"	12.0"	12.0"	12.0"	12.0"	12.0"	12.0"
		51	12.0"	12.0"	12.0"	12.0"	12.0"	12.0"	12.0"	12.0"	12.0"
		60	12.0"	12.0"	12.0"	12.0"	12.0"	12.0"	12.0"	12.0"	12.0"
		60	12.0"	12.0"	12.0"	12.0"	12.0"	12.0"	12.0"	12.0"	12.0"
	1/4" ELCO PANELMATE (FEMALE, MALE, or PLUS) W/ 2" EMBED AND 2-1/2" MIN. EDGE DISTANCE (3350 psi MIN CONC)	21	12.0"	12.0"	12.0"	12.0"	12.0"	12.0"	12.0"	12.0"	12.0"
		31	12.0"	12.0"	12.0"	12.0"	12.0"	12.0"	12.0"	12.0"	12.0"
		41	12.0"	12.0"	12.0"	12.0"	12.0"	12.0"	12.0"	12.0"	12.0"
		51	12.0"	12.0"	12.0"	12.0"	12.0"	12.0"	12.0"	12.0"	12.0"
		60	12.0"	12.0"	12.0"	12.0"	12.0"	12.0"	12.0"	12.0"	12.0"
		60	12.0"	12.0"	12.0"	12.0"	12.0"	12.0"	12.0"	12.0"	12.0"
	1/4" ITW TAPCON STORM GAURD W/ 1-3/4" EMBED AND 1-1/4" MIN. EDGE DISTANCE (3295 psi MIN CONCRETE)	21	12.0"	12.0"	12.0"	12.0"	12.0"	12.0"	12.0"	12.0"	12.0"
		31	12.0"	12.0"	12.0"	12.0"	12.0"	12.0"	12.0"	12.0"	12.0"
		41	12.0"	12.0"	12.0"	12.0"	12.0"	12.0"	12.0"	12.0"	12.0"
		51	12.0"	12.0"	12.0"	12.0"	12.0"	12.0"	12.0"	12.0"	12.0"
		60	12.0"	12.0"	12.0"	12.0"	12.0"	12.0"	12.0"	12.0"	12.0"
		60	12.0"	12.0"	12.0"	12.0"	12.0"	12.0"	12.0"	12.0"	12.0"
1/4-20 ALL POINTS SOLID- SET WITH 7/8" EMBED AND 1-1/4" MIN. EDGE DISTANCE (3000 psi MIN CONCRETE)	21	12.0"	12.0"	12.0"	12.0"	12.0"	12.0"	12.0"	12.0"	12.0"	
	31	12.0"	12.0"	12.0"	12.0"	12.0"	12.0"	12.0"	12.0"	12.0"	
	41	12.0"	12.0"	12.0"	12.0"	12.0"	12.0"	12.0"	12.0"	12.0"	
	51	12.0"	12.0"	12.0"	12.0"	12.0"	12.0"	12.0"	12.0"	12.0"	
	60	12.0"	12.0"	12.0"	12.0"	12.0"	12.0"	12.0"	12.0"	12.0"	
	60	12.0"	12.0"	12.0"	12.0"	12.0"	12.0"	12.0"	12.0"	12.0"	

HOST STRUCT.	ANCHOR	LOAD (psf)	EDGE DISTANCES AS NOTED								
			Spans Up To 3'-4" (40")			Spans Up To 7'-0" (84")			Spans Up To 11'-0" (132")		
			CONNECTION TYPE			CONNECTION TYPE			CONNECTION TYPE		
HOLLOW (OR GROUT-FILLED) BLOCK	1/4" ITW TAPCON WITH 1" EMBED AND 2" MIN. EDGE DISTANCE (1900 psi MIN CMU)	21	12.0"	12.0"	12.0"	12.0"	12.0"	11.0"	12.0"	12.0"	7.0"
		31	12.0"	12.0"	12.0"	12.0"	12.0"	12.0"	7.5"	12.0"	7.0"
		41	12.0"	12.0"	12.0"	6.0"	9.5"	5.5"	12.0"	12.0"	7.0"
		51	12.0"	12.0"	9.5"	12.0"	12.0"	11.0"	12.0"	12.0"	7.0"
		60	12.0"	12.0"	8.0"	12.0"	12.0"	11.5"	12.0"	12.0"	7.0"
		60	12.0"	12.0"	8.0"	12.0"	12.0"	9.0"	12.0"	12.0"	7.0"
	1/4" ELCO ULTRACON WITH 1-1/4" EMBED AND 1" MIN. EDGE DISTANCE (1900 psi MIN CMU)	21	12.0"	12.0"	12.0"	12.0"	12.0"	11.0"	12.0"	12.0"	7.0"
		31	12.0"	12.0"	12.0"	12.0"	12.0"	7.5"	12.0"	12.0"	7.0"
		41	12.0"	12.0"	12.0"	6.0"	11.5"	5.5"	12.0"	12.0"	7.0"
		51	12.0"	12.0"	9.5"	12.0"	12.0"	11.0"	12.0"	12.0"	7.0"
		60	12.0"	12.0"	8.0"	12.0"	12.0"	11.5"	12.0"	12.0"	7.0"
		60	12.0"	12.0"	8.0"	12.0"	12.0"	9.0"	12.0"	12.0"	7.0"
	1/4" ELCO PANELMATE (FEMALE, MALE, or PLUS) W/ 1-1/4" EMBED AND 2" MIN. EDGE DISTANCE (2000 psi MIN CMU)	21	12.0"	12.0"	12.0"	12.0"	12.0"	12.0"	12.0"	12.0"	11.0"
		31	12.0"	12.0"	12.0"	12.0"	12.0"	11.5"	12.0"	12.0"	11.0"
		41	12.0"	12.0"	12.0"	12.0"	12.0"	9.0"	12.0"	12.0"	11.0"
		51	12.0"	12.0"	12.0"	12.0"	12.0"	12.0"	12.0"	12.0"	11.0"
		60	12.0"	12.0"	12.0"	12.0"	12.0"	12.0"	12.0"	12.0"	11.0"
		60	12.0"	12.0"	12.0"	12.0"	12.0"	12.0"	12.0"	12.0"	11.0"
	1/4-20 ALL POINTS SOLID- SET WITH 7/8" EMBED AND 1-1/4" MIN. EDGE DISTANCE (1800 psi MIN CMU)	21	12.0"	12.0"	12.0"	12.0"	12.0"	11.5"	12.0"	12.0"	7.0"
		31	12.0"	12.0"	12.0"	12.0"	12.0"	7.5"	12.0"	12.0"	7.0"
		41	12.0"	12.0"	12.0"	12.0"	12.0"	5.5"	12.0"	12.0"	7.0"
		51	12.0"	12.0"	9.5"	12.0"	12.0"	12.0"	12.0"	12.0"	7.0"
		60	12.0"	12.0"	8.0"	12.0"	12.0"	12.0"	12.0"	12.0"	7.0"
		60	12.0"	12.0"	8.0"	12.0"	12.0"	12.0"	12.0"	12.0"	7.0"

HOST STRUCT.	ANCHOR	LOAD (psf)	EDGE DISTANCES AS NOTED								
			Spans Up To 3'-4" (40")			Spans Up To 7'-0" (84")			Spans Up To 11'-0" (132")		
			CONNECTION TYPE			CONNECTION TYPE			CONNECTION TYPE		
WOOD	1/4" ITW TAPCON WITH 1-3/8" THREAD PEN. AND 3/4" MIN. EDGE DISTANCE (G=0.42 MIN)	21	12.0"	12.0"	12.0"	12.0"	12.0"	12.0"	12.0"	12.0"	10.0"
		31	12.0"	12.0"	12.0"	12.0"	12.0"	11.0"	12.0"	12.0"	10.0"
		41	12.0"	12.0"	12.0"	12.0"	12.0"	8.0"	12.0"	12.0"	10.0"
		51	12.0"	12.0"	12.0"	12.0"	12.0"	12.0"	12.0"	12.0"	10.0"
		60	12.0"	12.0"	12.0"	12.0"	12.0"	12.0"	12.0"	12.0"	10.0"
		60	12.0"	12.0"	12.0"	12.0"	12.0"	12.0"	12.0"	12.0"	10.0"
	1/4" ELCO ULTRACON WITH 1-3/8" THREAD PEN. AND 3/4" MIN. EDGE DISTANCE (G=0.42 MIN)	21	12.0"	12.0"	12.0"	12.0"	12.0"	12.0"	12.0"	12.0"	10.0"
		31	12.0"	12.0"	12.0"	12.0"	12.0"	11.0"	12.0"	12.0"	10.0"
		41	12.0"	12.0"	12.0"	12.0"	12.0"	8.0"	12.0"	12.0"	10.0"
		51	12.0"	12.0"	12.0"	12.0"	12.0"	12.0"	12.0"	12.0"	10.0"
		60	12.0"	12.0"	12.0"	12.0"	12.0"	12.0"	12.0"	12.0"	10.0"
		60	12.0"	12.0"	12.0"	12.0"	12.0"	12.0"	12.0"	12.0"	10.0"
	1/4" ELCO PANELMATE (FEMALE, MALE, or PLUS) W/ 1-7/8" EMBED AND 3/4" MIN. EDGE DISTANCE (G=0.54 MIN.)	21	12.0"	12.0"	12.0"	12.0"	12.0"	12.0"	12.0"	12.0"	12.0"
		31	12.0"	12.0"	12.0"	12.0"	12.0"	12.0"	12.0"	12.0"	12.0"
		41	12.0"	12.0"	12.0"	12.0"	12.0"	12.0"	12.0"	12.0"	12.0"
		51	12.0"	12.0"	12.0"	12.0"	12.0"	12.0"	12.0"	12.0"	12.0"
		60	12.0"	12.0"	12.0"	12.0"	12.0"	12.0"	12.0"	12.0"	12.0"
		60	12.0"	12.0"	12.0"	12.0"	12.0"	12.0"	12.0"	12.0"	12.0"
	1/4" ITW TAPCON STORM GAURD W/ 1-3/4" EMBED AND 1-1/4" MIN. EDGE DISTANCE (G=0.42 MIN)	21	12.0"	12.0"	12.0"	12.0"	12.0"	12.0"	12.0"	12.0"	10.0"
		31	12.0"	12.0"	12.0"	12.0"	12.0"	11.0"	12.0"	12.0"	10.0"
		41	12.0"	12.0"	12.0"	12.0"	12.0"	8.0"	12.0"	12.0"	10.0"
		51	12.0"	12.0"	12.0"	12.0"	12.0"	12.0"	12.0"	12.0"	10.0"
		60	12.0"	12.0"	12.0"	12.0"	12.0"	12.0"	12.0"	12.0"	10.0"
		60	12.0"	12.0"	12.0"	12.0"	12.0"	12.0"	12.0"	12.0"	10.0"
1/4-20 PANELMATE INSERT WITH 1-5/8" EMBED AND 3/4" MIN. EDGE DISTANCE (G=0.42 MIN.)	21	12.0"	12.0"	12.0"	12.0"	12.0"	12.0"	12.0"	12.0"	11.5"	
	31	12.0"	12.0"	12.0"	12.0"	12.0"	12.0"	12.0"	12.0"	11.5"	
	41	12.0"	12.0"	12.0"	12.0"	12.0"	9.0"	12.0"	12.0"	11.5"	
	51	12.0"	12.0"	12.0"	12.0"	12.0"	12.0"	12.0"	12.0"	11.5"	
	60	12.0"	12.0"	12.0"	12.0"	12.0"	12.0"	12.0"	12.0"	11.5"	
	60	12.0"	12.0"	12.0"	12.0"	12.0"	12.0"	12.0"	12.0"	11.5"	
1/4" WOOD OR LAG SCREW WITH 1-3/8" MIN THREAD PEN. AND 3/4" MIN. EDGE DISTANCE (G=0.42 MIN.)	21	12.0"	12.0"	12.0"	12.0"	12.0"	12.0"	12.0"	12.0"	9.5"	
	31	12.0"	12.0"	12.0"	12.0"	12.0"	10.5"	12.0"	12.0"	9.5"	
	41	12.0"	12.0"	12.0"	12.0"	12.0"	7.5"	12.0"	12.0"	9.5"	
	51	12.0"	12.0"	12.0"	12.0"	12.0"	12.0"	12.0"	12.0"	9.5"	
	60	12.0"	12.0"	12.0"	12.0"	12.0"	12.0"	12.0"	12.0"	9.5"	
	60	12.0"	12.0"	12.0"	12.0"	12.0"	11.0"	12.0"	12.0"	9.5"	

ANCHOR NOTES:

- ANCHOR SCHEDULE APPLIES TO ALL PRODUCTS CERTIFIED HEREIN, BUT ONLY PROVIDES MAXIMUM ALLOWABLE ANCHOR SPACING. MAXIMUM ALLOWABLE SPANS AND PRESSURES INDICATED IN SPAN SCHEDULE SHALL APPLY.
- ENTER ANCHOR SCHEDULE BASED ON PANEL FASTENER SPACING, THE EXISTING STRUCTURE MATERIAL, & ANCHOR TYPE. SELECT DESIGN LOAD GREATER THAN OR EQUAL TO NEGATIVE DESIGN LOAD ON SHUTTER AND SELECT SPAN GREATER THAN OR EQUAL TO SHUTTER SPAN. SELECT CONNECTION TYPE BASED ON APPROPRIATE MOUNTING CONDITION (SEE MOUNTING DETAILS ON SHEET 3 FOR IDENTIFICATION OF CONNECTION TYPE).
- "PANEL FASTENERS" ARE STUDS USED IN CONJUNCTION WITH ALL MOUNTING EXTRUSIONS ("F"-TRACK, STUDDING ANGLE, ETC.). "PANEL FASTENERS" SHALL BE SPACED AT 12" O.C. ALL END PANEL HOLES SHALL HAVE PANEL FASTENERS, TYP.
- ANCHORS SHALL BE INSTALLED IN ACCORDANCE WITH MANUFACTURERS' RECOMMENDATIONS.
- HOLLOW BLOCK HOST STRUCTURE SHALL CONFORM TO ASTM C90 BLOCK.
- MINIMUM EMBEDMENT SHALL BE AS NOTED IN ANCHOR SCHEDULE.
- MINIMUM EMBEDMENT AND EDGE DISTANCE EXCLUDES STUCCO, FOAM, BRICK, AND OTHER WALL FINISHES. WALL FINISHES SHALL BE LIMITED TO 1/4" MAX OR SHALL BE VERIFIED BY OTHERS TO ADEQUATELY TRANSFER LOADS TO HOST STRUCTURE.
- CONCRETE ANCHORS NOTED HEREIN SHALL BE EMBEDDED TO UN-CRACKED CONCRETE ONLY.
- WHERE EXISTING STRUCTURE IS WOOD FRAMING, EXISTING CONDITIONS MAY VARY. FIELD VERIFY THAT FASTENERS ARE INTO ADEQUATE WOOD FRAMING MEMBERS, NOT PLYWOOD. FASTENING TO PLYWOOD IS ACCEPTABLE ONLY FOR SIDE CLOSURE PIECES.
- WHERE ANCHORS FASTEN TO NARROW FACE OF STUD FRAMING, FASTENER SHALL BE LOCATED IN CENTER OF NOMINAL 2" X 4" (MIN.) WOOD STUD (3/4" EDGE DISTANCE IS ACCEPTABLE FOR WOOD FRAMING). WOOD STUD SHALL BE G=0.42 OR GREATER DENSITY, U.N.O. LAG SCREWS SHALL HAVE PHILLIPS PAN HEAD OR HEX HEAD.
- REMOVABLE ANCHORS ARE: ELCO PANELMATE, ALL-POINTS SOLID-SET.
- MACHINE SCREWS SHALL HAVE 1/2" MINIMUM ENGAGEMENT OF THREADS INTO THE BASE ANCHOR AND MAY HAVE EITHER A PAN HEAD, TRUSS HEAD, OR WAFER HEAD (SIDEWALK BOLT) U.N.O.
- MINIMUM EMBEDMENT AND EDGE DISTANCE EXCLUDES STUCCO OR OTHER WALL FINISHES.
- DESIGNATES ANCHOR CONDITIONS WHICH ARE NOT ACCEPTABLE USES.
- DIRECT MOUNTING CONDITIONS.
- LINEAR INTERPOLATION IS NOT PERMITTED FOR USE WITH THE ANCHOR SCHEDULES LISTED ON THIS SHEET.
- PROVIDE KEYHOLE WASHER FOR 1/4-20 SIDEWALK BOLTS (OR TRUSS HEAD SCREWS)



NOTICE: IF THIS SHEET DOES NOT CONTAIN AN ORIGINAL SIGNATURE AND SEAL, THIS SHEET IS PART OF A DIGITALLY SIGNED FILE, AND PRINTED COPIES OF THIS DOCUMENT ARE NOT CONSIDERED SIGNED AND SEALED. IF THERE IS NO DIGITAL SIGNATURE ON SHEET 1 OR THIS SHEET DOES NOT CONTAIN AN ENGINEER'S ORIGINAL SIGNATURE & SEAL, THIS SHEET IS A COPY/DRAFT.

ENGINEERING EXPRESS
 CORPORATE OFFICE:
 160 SW 12TH AVE, SUITE 106
 DEERFIELD BEACH, FL 33442
 P: (954) 354-0660 F: (954) 354-0443
 E: HELLO@ENGINEERINGEXPRESS.COM
 CERT OF AUTH #9885

EASTERN METAL SUPPLY
 4268 WESTROADS DR
 WEST PALM BEACH, FL
 (800) 432-2204
 2" CLEAR BERTHA STORM PANEL
 FLORIDA BUILDING CODE
 FLORIDA STATEWIDE APPROVAL FL28390.1

REMARKS	DATE	DRWN	CHKD	DATE
INIT ISSUE	09/27/18			

COPYRIGHT ENGINEERING EXPRESS
18-6492
 SCALE: NTS UNLESS NOTED
 OF 5
4

ANCHOR SPACING (FOR SCHEDULE 2 - NON-HVHZ ONLY):

2" CLEAR PANELS

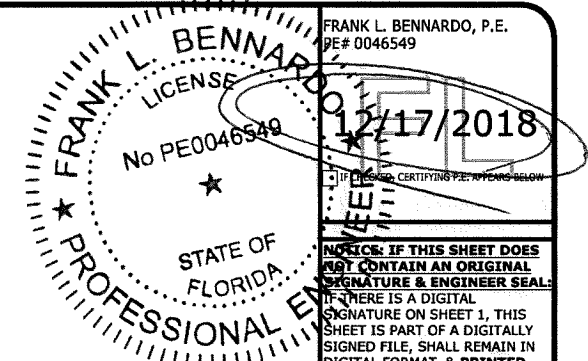
HOST STRUCT.	ANCHOR	LOAD (psf)	EDGE DISTANCES AS NOTED					
			Spans Up To 3'-0"		Spans Up To 7'-0"		Spans Up To 12'-0"	
			CONN TYPE	CONN TYPE	CONN TYPE	CONN TYPE	CONN TYPE	CONN TYPE
CONCRETE	1/4" ITW TAPCON WITH 1-3/4" EMBED AND 1-1/2" MIN. EDGE DISTANCE (3192 psi MIN CONCRETE)	35	12.0"	12.0"	12.0"	12.0"	12.0"	12.0"
		40	12.0"	12.0"	12.0"	12.0"	12.0"	12.0"
		45	12.0"	12.0"	12.0"	12.0"	12.0"	12.0"
		50	12.0"	12.0"	12.0"	12.0"	12.0"	12.0"
		55	12.0"	12.0"	12.0"	12.0"	12.0"	12.0"
		60	12.0"	12.0"	12.0"	12.0"	12.0"	12.0"
	1/4" ELCO ULTRACON WITH 1-3/4" EMBED AND 1" MIN. EDGE DISTANCE (2846 psi MIN CONCRETE)	35	12.0"	12.0"	12.0"	12.0"	12.0"	12.0"
		40	12.0"	12.0"	12.0"	12.0"	12.0"	12.0"
		45	12.0"	12.0"	12.0"	12.0"	12.0"	12.0"
		50	12.0"	12.0"	12.0"	12.0"	12.0"	12.0"
		55	12.0"	12.0"	12.0"	12.0"	12.0"	12.0"
		60	12.0"	12.0"	12.0"	12.0"	12.0"	12.0"
	1/4" ELCO PANELMATE (FEMALE, MALE, or PLUS) W/ 2" EMBED AND 2-1/2" MIN. EDGE DISTANCE (3350 psi MIN CONC)	35	12.0"	12.0"	12.0"	12.0"	12.0"	12.0"
		40	12.0"	12.0"	12.0"	12.0"	12.0"	12.0"
		45	12.0"	12.0"	12.0"	12.0"	12.0"	12.0"
		50	12.0"	12.0"	12.0"	12.0"	12.0"	12.0"
		55	12.0"	12.0"	12.0"	12.0"	12.0"	12.0"
		60	12.0"	12.0"	12.0"	12.0"	12.0"	12.0"
	1/4" ITW TAPCON STORM GAURD W/ 1-3/4" EMBED AND 1-1/4" MIN. EDGE DISTANCE (3295 psi MIN CONCRETE)	35	12.0"	12.0"	12.0"	12.0"	12.0"	12.0"
		40	12.0"	12.0"	12.0"	12.0"	12.0"	12.0"
		45	12.0"	12.0"	12.0"	12.0"	12.0"	12.0"
		50	12.0"	12.0"	12.0"	12.0"	12.0"	12.0"
		55	12.0"	12.0"	12.0"	12.0"	12.0"	12.0"
		60	12.0"	12.0"	12.0"	12.0"	12.0"	12.0"
1/4-20 ALL POINTS SOLID- SET WITH 7/8" EMBED AND 1-1/4" MIN. EDGE DISTANCE (3000 psi MIN CONCRETE)	35	12.0"	12.0"	12.0"	12.0"	12.0"	12.0"	
	40	12.0"	12.0"	12.0"	12.0"	12.0"	12.0"	
	45	12.0"	12.0"	12.0"	12.0"	12.0"	12.0"	
	50	12.0"	12.0"	12.0"	12.0"	12.0"	12.0"	
	55	12.0"	12.0"	12.0"	12.0"	12.0"	12.0"	
	60	12.0"	12.0"	12.0"	12.0"	12.0"	12.0"	

HOST STRUCT.	ANCHOR	LOAD (psf)	EDGE DISTANCES AS NOTED					
			Spans Up To 3'-0"		Spans Up To 7'-0"		Spans Up To 12'-0"	
			CONN TYPE	CONN TYPE	CONN TYPE	CONN TYPE	CONN TYPE	CONN TYPE
HOLLOW (OR GROUT-FILLED) BLOCK	1/4" ITW TAPCON WITH 1" EMBED AND 2" MIN. EDGE DISTANCE (1900 psi MIN CMU)	35	12.0"	12.0"	6.0"	11.5"	6.0"	6.0"
		40	12.0"	12.0"	6.0"	10.0"		
		45	12.0"	12.0"	6.0"	9.0"		
		50	12.0"	12.0"	6.0"	8.0"		
		55	12.0"	12.0"	6.0"	7.0"		
		60	12.0"	12.0"	6.0"	6.0"		
	1/4" ELCO ULTRACON WITH 1-1/4" EMBED AND 1" MIN. EDGE DISTANCE (1900 psi MIN CMU)	35	12.0"	12.0"	12.0"	12.0"	6.0"	7.0"
		40	12.0"	12.0"	12.0"	12.0"		
		45	12.0"	12.0"	6.0"	10.5"		
		50	12.0"	12.0"	6.0"	9.5"		
		55	12.0"	12.0"	6.0"	8.5"		
		60	12.0"	12.0"	6.0"	7.0"		
	1/4" ELCO PANELMATE (FEMALE, MALE, or PLUS) W/ 1-1/4" EMBED AND 2" MIN. EDGE DISTANCE (2000 psi MIN CMU)	35	12.0"	12.0"	12.0"	12.0"	12.0"	11.0"
		40	12.0"	12.0"	12.0"	12.0"		
		45	12.0"	12.0"	12.0"	12.0"		
		50	12.0"	12.0"	12.0"	12.0"		
		55	12.0"	12.0"	12.0"	12.0"		
		60	12.0"	12.0"	12.0"	11.0"		
	1/4-20 ALL POINTS SOLID- SET WITH 7/8" EMBED AND 1-1/4" MIN. EDGE DISTANCE (1800 psi MIN CMU)	35	12.0"	12.0"	12.0"	12.0"	6.0"	8.5"
		40	12.0"	12.0"	12.0"	12.0"		
		45	12.0"	12.0"	12.0"	12.0"		
		50	12.0"	12.0"	6.0"	11.0"		
		55	12.0"	12.0"	6.0"	10.0"		
		60	12.0"	12.0"	6.0"	8.5"		

HOST STRUCT.	ANCHOR	LOAD (psf)	EDGE DISTANCES AS NOTED					
			Spans Up To 3'-0"		Spans Up To 7'-0"		Spans Up To 12'-0"	
			CONN TYPE	CONN TYPE	CONN TYPE	CONN TYPE	CONN TYPE	CONN TYPE
WOOD	1/4" ITW TAPCON WITH 1-3/8" THREAD PEN. AND 3/4" MIN. EDGE DISTANCE (G=0.42 MIN)	35	12.0"	12.0"	12.0"	12.0"	12.0"	12.0"
		40	12.0"	12.0"	12.0"	12.0"	12.0"	12.0"
		45	12.0"	12.0"	12.0"	12.0"	12.0"	12.0"
		50	12.0"	12.0"	12.0"	12.0"	12.0"	12.0"
		55	12.0"	12.0"	12.0"	12.0"	12.0"	12.0"
		60	12.0"	12.0"	12.0"	12.0"	12.0"	12.0"
	1/4" ELCO ULTRACON WITH 1-3/8" THREAD PEN. AND 3/4" MIN. EDGE DISTANCE (G=0.42 MIN)	35	12.0"	12.0"	12.0"	12.0"	12.0"	12.0"
		40	12.0"	12.0"	12.0"	12.0"	12.0"	12.0"
		45	12.0"	12.0"	12.0"	12.0"	12.0"	12.0"
		50	12.0"	12.0"	12.0"	12.0"	12.0"	12.0"
		55	12.0"	12.0"	12.0"	12.0"	12.0"	12.0"
		60	12.0"	12.0"	12.0"	12.0"	12.0"	12.0"
	1/4" ELCO PANELMATE (FEMALE, MALE, or PLUS) W/ 1-7/8" EMBED AND 3/4" MIN. EDGE DISTANCE (G=0.54 MIN.)	35	12.0"	12.0"	12.0"	12.0"	12.0"	12.0"
		40	12.0"	12.0"	12.0"	12.0"	12.0"	12.0"
		45	12.0"	12.0"	12.0"	12.0"	12.0"	12.0"
		50	12.0"	12.0"	12.0"	12.0"	12.0"	12.0"
		55	12.0"	12.0"	12.0"	12.0"	12.0"	12.0"
		60	12.0"	12.0"	12.0"	12.0"	12.0"	12.0"
	1/4" ITW TAPCON STORM GAURD W/ 1-3/4" EMBED AND 1-1/4" MIN. EDGE DISTANCE (G=0.42 MIN)	35	12.0"	12.0"	12.0"	12.0"	12.0"	12.0"
		40	12.0"	12.0"	12.0"	12.0"	12.0"	12.0"
		45	12.0"	12.0"	12.0"	12.0"	12.0"	12.0"
		50	12.0"	12.0"	12.0"	12.0"	12.0"	12.0"
		55	12.0"	12.0"	12.0"	12.0"	12.0"	12.0"
		60	12.0"	12.0"	12.0"	12.0"	12.0"	12.0"
1/4-20 PANELMATE INSERT WITH 1-5/8" EMBED AND 3/4" MIN. EDGE DISTANCE (G=0.42 MIN.)	35	12.0"	12.0"	12.0"	12.0"	12.0"	11.5"	
	40	12.0"	12.0"	12.0"	12.0"	12.0"	11.5"	
	45	12.0"	12.0"	12.0"	12.0"	12.0"	11.5"	
	50	12.0"	12.0"	12.0"	12.0"	12.0"	11.5"	
	55	12.0"	12.0"	12.0"	12.0"	12.0"	11.5"	
	60	12.0"	12.0"	12.0"	12.0"	12.0"	11.5"	
1/4" WOOD OR LAG SCREW WITH 1-3/8" MIN THREAD PEN. AND 3/4" MIN. EDGE DISTANCE (G=0.42 MIN.)	35	12.0"	12.0"	12.0"	12.0"	12.0"	11.5"	
	40	12.0"	12.0"	12.0"	12.0"	12.0"	11.5"	
	45	12.0"	12.0"	12.0"	12.0"	12.0"	11.5"	
	50	12.0"	12.0"	12.0"	12.0"	12.0"	11.5"	
	55	12.0"	12.0"	12.0"	12.0"	12.0"	11.5"	
	60	12.0"	12.0"	12.0"	12.0"	12.0"	11.5"	

ANCHOR NOTES:

- ANCHOR SCHEDULE APPLIES TO ALL PRODUCTS CERTIFIED HEREIN, BUT ONLY PROVIDES MAXIMUM ALLOWABLE ANCHOR SPACING. MAXIMUM ALLOWABLE SPANS AND PRESSURES INDICATED IN SPAN SCHEDULE SHALL APPLY.
- ENTER ANCHOR SCHEDULE BASED ON PANEL FASTENER SPACING, THE EXISTING STRUCTURE MATERIAL, & ANCHOR TYPE. SELECT DESIGN LOAD GREATER THAN OR EQUAL TO NEGATIVE DESIGN LOAD ON SHUTTER AND SELECT SPAN GREATER THAN OR EQUAL TO SHUTTER SPAN. THIS SHEET APPLIES TO CONNECTION TYPE "C1" AND "C2" ONLY (SEE MOUNTING DETAILS ON SHEET 3 FOR IDENTIFICATION OF CONNECTION TYPE). "H" HEADER AND "U" HEADER OPTIONS ARE NOT APPLICABLE FOR THESE TABLES.
- ANCHORS SHALL BE INSTALLED IN ACCORDANCE WITH MANUFACTURERS' RECOMMENDATIONS.
- HOLLOW BLOCK HOST STRUCTURE SHALL CONFORM TO ASTM C90 BLOCK.
- MINIMUM EMBEDMENT SHALL BE AS NOTED IN ANCHOR SCHEDULE.
- MINIMUM EMBEDMENT AND EDGE DISTANCE EXCLUDES STUCCO, FOAM, BRICK, AND OTHER WALL FINISHES. WALL FINISHES SHALL BE LIMITED TO 1/4" MAX OR SHALL BE VERIFIED BY OTHERS TO ADEQUATELY TRANSFER LOADS TO HOST STRUCTURE.
- CONCRETE ANCHORS NOTED HEREIN SHALL BE EMBEDDED TO UN-CRACKED CONCRETE ONLY.
- WHERE EXISTING STRUCTURE IS WOOD FRAMING, EXISTING CONDITIONS MAY VARY. FIELD VERIFY THAT FASTENERS ARE INTO ADEQUATE WOOD FRAMING MEMBERS, NOT PLYWOOD. FASTENING TO PLYWOOD IS ACCEPTABLE ONLY FOR SIDE CLOSURE PIECES.
- WHERE ANCHORS FASTEN TO NARROW FACE OF STUD FRAMING, FASTENER SHALL BE LOCATED IN CENTER OF NOMINAL 2" X 4" (MIN.) WOOD STUD (3/4" EDGE DISTANCE IS ACCEPTABLE FOR WOOD FRAMING). WOOD STUD SHALL BE G=0.42 OR GREATER DENSITY, U.N.O. LAG SCREWS SHALL HAVE PHILLIPS PAN HEAD OR HEX HEAD.
- REMOVABLE ANCHORS ARE: ELCO PANELMATE, ALL-POINTS SOLID-SET.
- MACHINE SCREWS SHALL HAVE 1/2" MINIMUM ENGAGEMENT OF THREADS INTO THE BASE ANCHOR AND MAY HAVE EITHER A PAN HEAD, TRUSS HEAD, OR WAFER HEAD (SIDEWALK BOLT) U.N.O.
- MINIMUM EMBEDMENT AND EDGE DISTANCE EXCLUDES STUCCO OR OTHER WALL FINISHES.
- ☒ DESIGNATES ANCHOR CONDITIONS WHICH ARE NOT ACCEPTABLE USES.
- * DIRECT MOUNTING CONDITIONS.
- LINEAR INTERPOLATION IS NOT PERMITTED FOR USE WITH THE ANCHOR SCHEDULES LISTED ON THIS SHEET.
- PROVIDE KEYHOLE WASHER FOR 1/4-20 SIDEWALK BOLTS



FRANK L. BENNARDO, P.E.
PE# 0046549

NOTICE: IF THIS SHEET DOES NOT CONTAIN AN ORIGINAL SIGNATURE & ENGINEER SEAL, THERE IS A DIGITAL SIGNATURE ON SHEET 1. THIS SHEET IS PART OF A DIGITALLY SIGNED FILE, SHALL REMAIN IN DIGITAL FORMAT, & PRINTED COPIES OF THIS DOCUMENT ARE NOT CONSIDERED SIGNED AND SEALED. IF THERE IS NO DIGITAL SIGNATURE ON SHEET 1 OR THIS SHEET DOES NOT CONTAIN AN ENGINEER'S ORIGINAL SIGNATURE & SEAL, THIS SHEET IS A COPY/DRAFT.

ENGINEERING EXPRESS
CORPORATE OFFICE:
160 SW 12th AVE, SUITE 106
DEERFIELD BEACH, FL 33442
P: (954) 354-0660 F: (954) 354-0443
E: HELLO@ENGINEERINGEXPRESS.COM
ENGINEERINGEXPRESS.COM
CERT OF AUTH #9885

EASTERN METAL SUPPLY
4268 WESTROADS DR
WEST PALM BEACH, FL
(800) 432-2204
2" CLEAR BERTHA STORM PANEL
FLORIDA BUILDING CODE
FLORIDA STATEWIDE APPROVAL FL28390.1

REMARKS	DATE	DRWN	CHKD
INIT ISSUE	09/27/18	RWN	FLB

THIS DOCUMENT IS THE PROPERTY OF ENGINEERING EXPRESS AND SHALL NOT BE REPRODUCED OR TRANSMITTED IN ANY FORM OR BY ANY MEANS, ELECTRONIC OR MECHANICAL, INCLUDING PHOTOCOPYING, RECORDING, OR BY ANY INFORMATION STORAGE AND RETRIEVAL SYSTEMS WITHOUT THE WRITTEN PERMISSION OF ENGINEERING EXPRESS. PERMISSION IS GRANTED TO REPRODUCE THIS DOCUMENT FOR PERSONAL USE ONLY. PERMISSION IS NOT GRANTED TO REPRODUCE THIS DOCUMENT FOR ANY OTHER PURPOSE.

COPYRIGHT ENGINEERING EXPRESS®
18-6492
SCALE: NTS UNLESS NOTED